

Lampblack

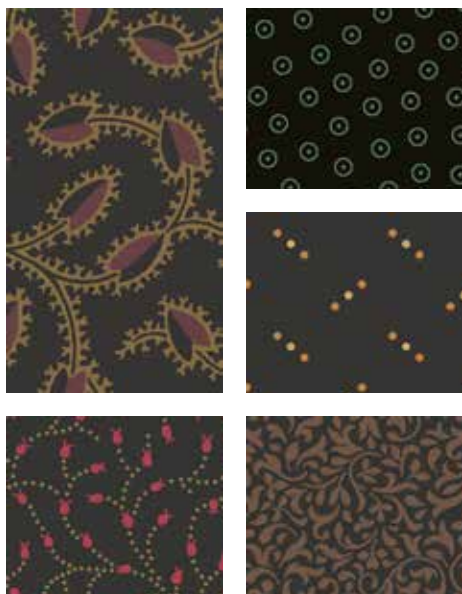
BY KATHY HALL



Cross Hatch Quilt Design:
Jean Ann Wright

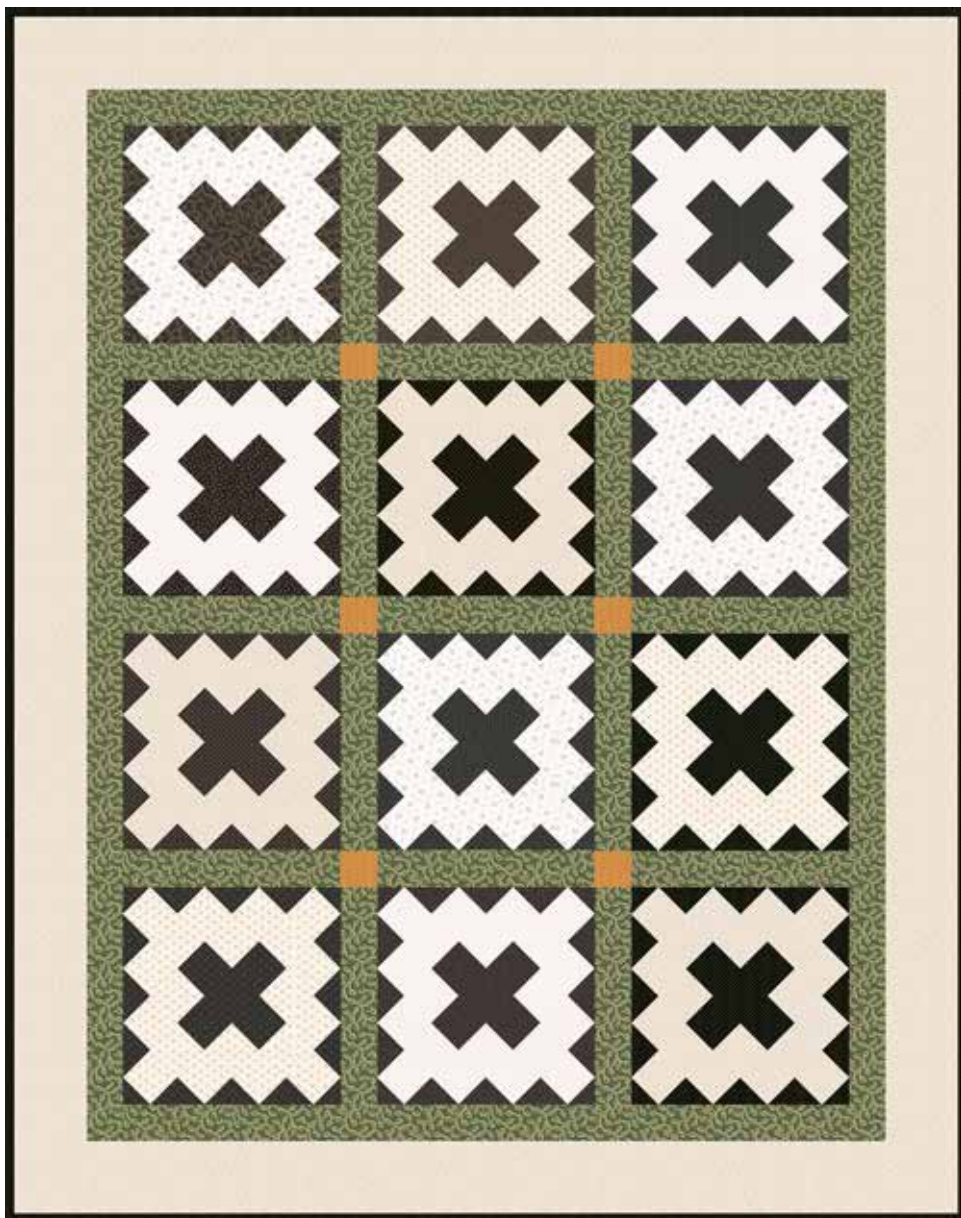
Quilt Size: 52" x 66"

andoverfabrics.com



About Lampblack

Inspired by the residue created by oil lamps of the 19th century, these must-have prints are delicately dotted with color accents to give them a unique and special character.



andover

•
•
• makower uk
•
• *The Henley Studio*

Free Pattern Download Available

1384 Broadway New York, NY 10018
Tel. (800) 223-5678 • andoverfabrics.com

Cross Hatch

Introducing Andover Fabrics new collection:
Lampblack by Kathy Hall
Quilt design by Jean Ann Wright



Quilt finishes 52" x 66"
12 Blocks: 12" x 12"

Contrasting light and dark traditional prints, framed with soft green sashes, make a charming throw-size quilt. The traditional Chimney Sweep blocks, popular in the 1920s and 1930s, are perfect for this homage to our quilting ancestors.

Cutting Directions

Note: Read assembly directions before cutting patches. All measurements are cut sizes and include 1/4" seam allowances. A fat 1/8 is a 9" x 20"-22" cut. Borders are cut the exact lengths required plus 1/4" seam allowances. WOF designates the width of fabric from selvedge to selvedge (approximately 42" wide).

Fabric A

Cut (2) side borders 2 1/2" x 54 1/2", cut lengthwise
Cut (2) top/bottom borders borders 2 1/2" x 44 1/2", cut lengthwise
Cut (17) sashes 2 1/2" x 12 1/2"

Fabric B

Cut (6) setting squares 2 1/2"

Fabric C

Cut (2) side borders 4 1/2" x 58 1/2", cut lengthwise
Cut (2) top/bottom borders 4 1/2" x 52 1/2", cut lengthwise
Cut patches for 3 blocks (see 3 Lights list)

Fabric D

Cut (6) strips 2 1/4" x WOF for binding
Cut patches for 1 block (see 11 Darks list)

Fabric Requirements

		Yardage	Fabric
Fabric A	border, sashes	1 3/4 yards	8144-G
Fabric B	setting squares	fat 1/8 yard	8145-O
Fabric C	border, blocks	1 3/4 yards	8148-L
Fabric D	blocks, binding	3/4 yard	8154-K
3 Lights	blocks	3/8 yard ea.	
	8146-L	*8147-L	8159-L
11 Darks	blocks	fat 1/8 yard ea.	
	8144-K	8151-K1	8155-K
	8156-K	8156-K1	8157-K
	8157-K1	8158-K1	8159-K
	8216-K	8216-K1	
Backing	3 1/2 yards	*8147-L	

3 Lights

Cut patches for 3 blocks from each:
Cut (6) rectangles 2 5/8" x 6 7/8"
Cut (18) rectangles 2 5/8" x 4 3/4"
Cut (6) squares 2 5/8"

11 Darks

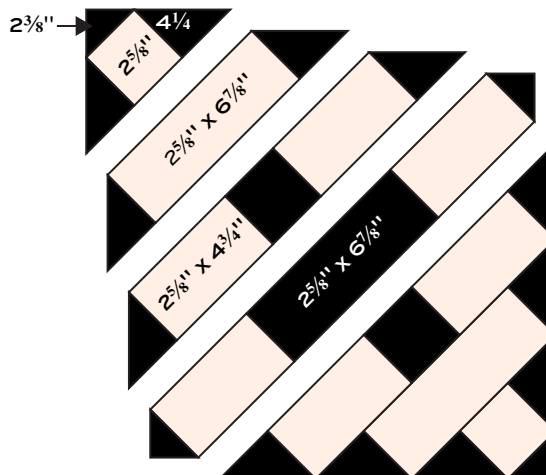
Cut patches for 1 block from each:
Cut (3) squares 4 1/4", cut in half diagonally twice to make 12 quarter-square triangles
Cut (1) rectangle 2 5/8" x 6 7/8"
Cut (2) squares 2 5/8"
Cut (2) squares 2 3/8", cut in half diagonally to make 4 half-square triangles

Backing

Cut (2) panels 37" x 60", pieced to fit quilt top with overlap on all sides

Making the Quilt

1. Referring to the Block diagram, sew dark patches to the light rectangles and squares to make rows. Press seam allowances toward the dark patches. Join the rows to make a block. Make 12 blocks.
2. Referring to the Quilt Diagram, arrange the blocks in rows. Join 3 blocks alternately with 2 sashes to make a block row. Make 4.
3. Join 3 sashes alternately with 2 Fabric B squares to make a sash row. Make 3. Join the rows in the order shown.
4. Sew longer Fabric A borders to the sides, and sew shorter borders to top and bottom. Repeat with Fabric C borders.

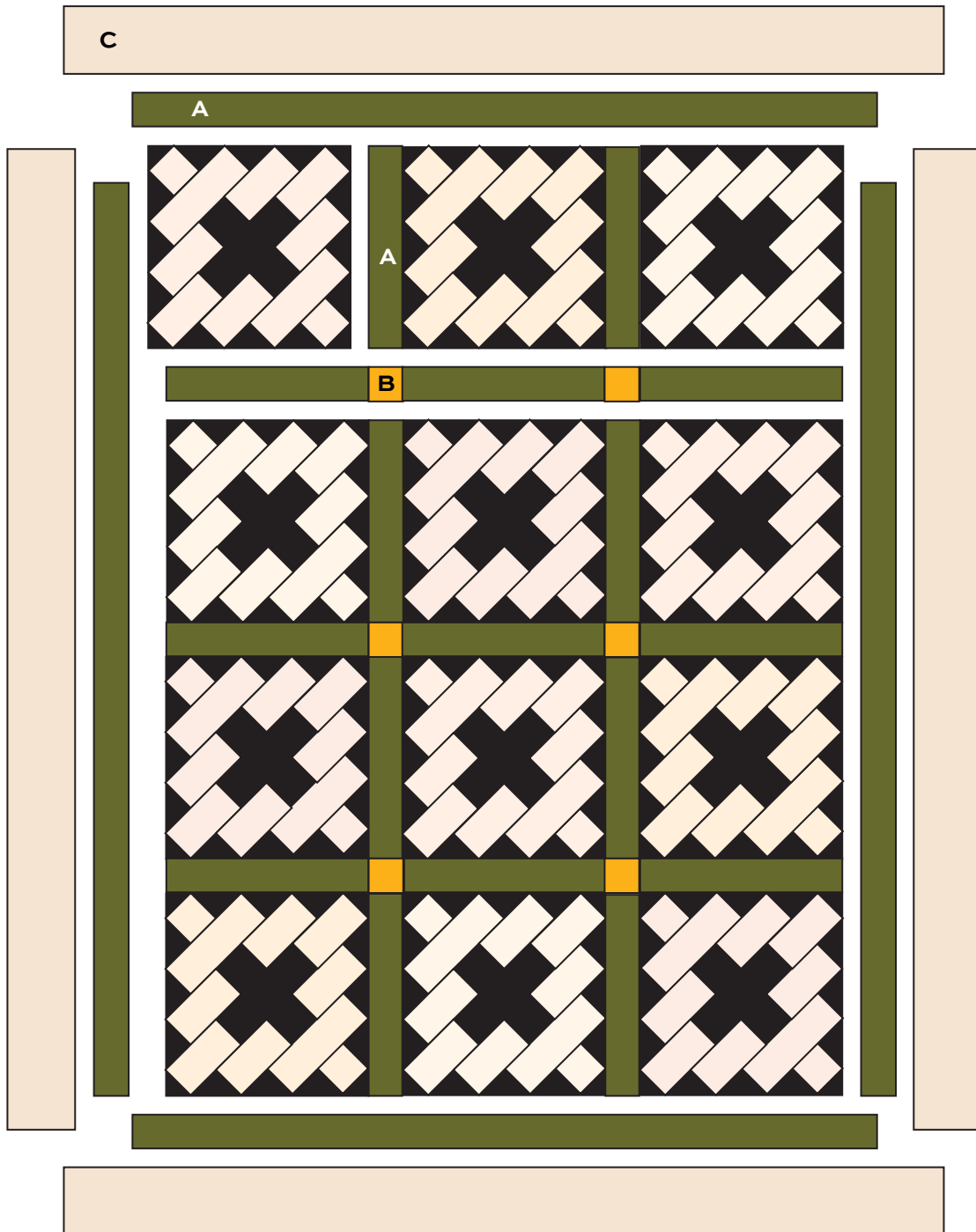


Block - Make 12

Cross Hatch

Finishing the Quilt

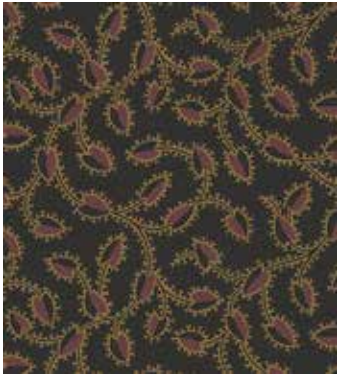
5. Layer the quilt with batting and backing and baste. Quilt in the ditch around borders and block patches. Bind to finish the quilt.



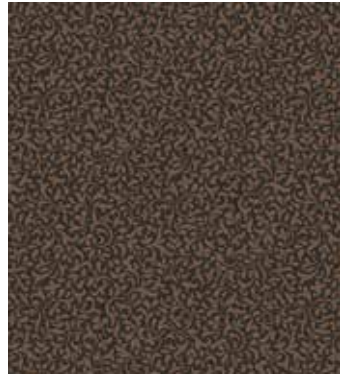
Quilt Diagram

Lampblack

BY KATHY HALL



8144-K



8151-K1



8154-K



8155-K



8156-K



8156-K1



8157-K



8157-K1



8158-K1



8159-K



8216-K



8216-K1

Blend with fabrics from **Trinkets** by Kathy Hall



8144-G



8145-O



8146-L



8147-L



8148-L



8159-L

All fabrics are used in quilt pattern. Fabrics shown are 50% of actual size.

andover

makower uk
The Henley Studio

Free Pattern Download Available

1384 Broadway New York, NY 10018
Tel. (800) 223-5678 • andoverfabrics.com